

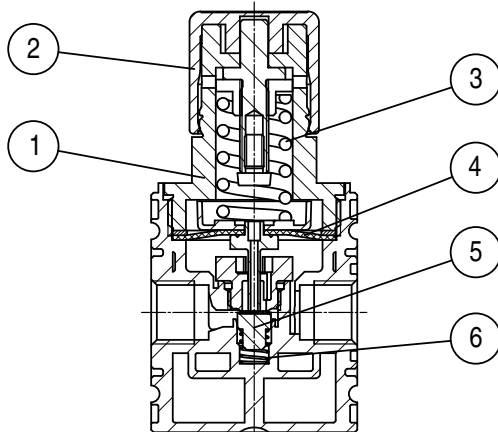
Regulator

FUTURA-SERIES

item	type	KREG-014/* G
port size		G 1/4
description		diaphragm-type pressure regulator with secondary air exhaust
medium		compressed air, neutral gases
mounting		arbitrary
medium- and ambient temperature		max. 60 °C
supply pressure		Pe max. 12 bar
reduced pressure 3		0,5-8 bar standard 0,2-4 bar, 0,5-10 bar
fixing		control panel installation, mounting bracket, wall mounting
weight		0,102 kg



material: Grivory (PA66) / IXEF1022



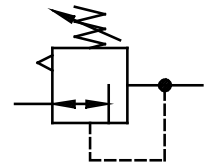
parts

(Service-Kit: KESA.0-xxxx)

no.	designation		material	order-no.
1	spring cage	C.00-72	POM	---
2	setting knob	R.00-31	POM	---
3	spring	C.11-86	galvanised steel	---
4	diaphragm	RE.00-14	brass-NBR-PA6	
5	valve cone	RE.00-15	brass-NBR-POM	
6	spring	DR.022-5	stainless steel	---

application information

- Setting knob can be locked by pressing downwards
- interlocking of several individual devices requires coupling kit(s) KKOP.0



series 0

ordering information

KREG - * / * ***

type

1 port size

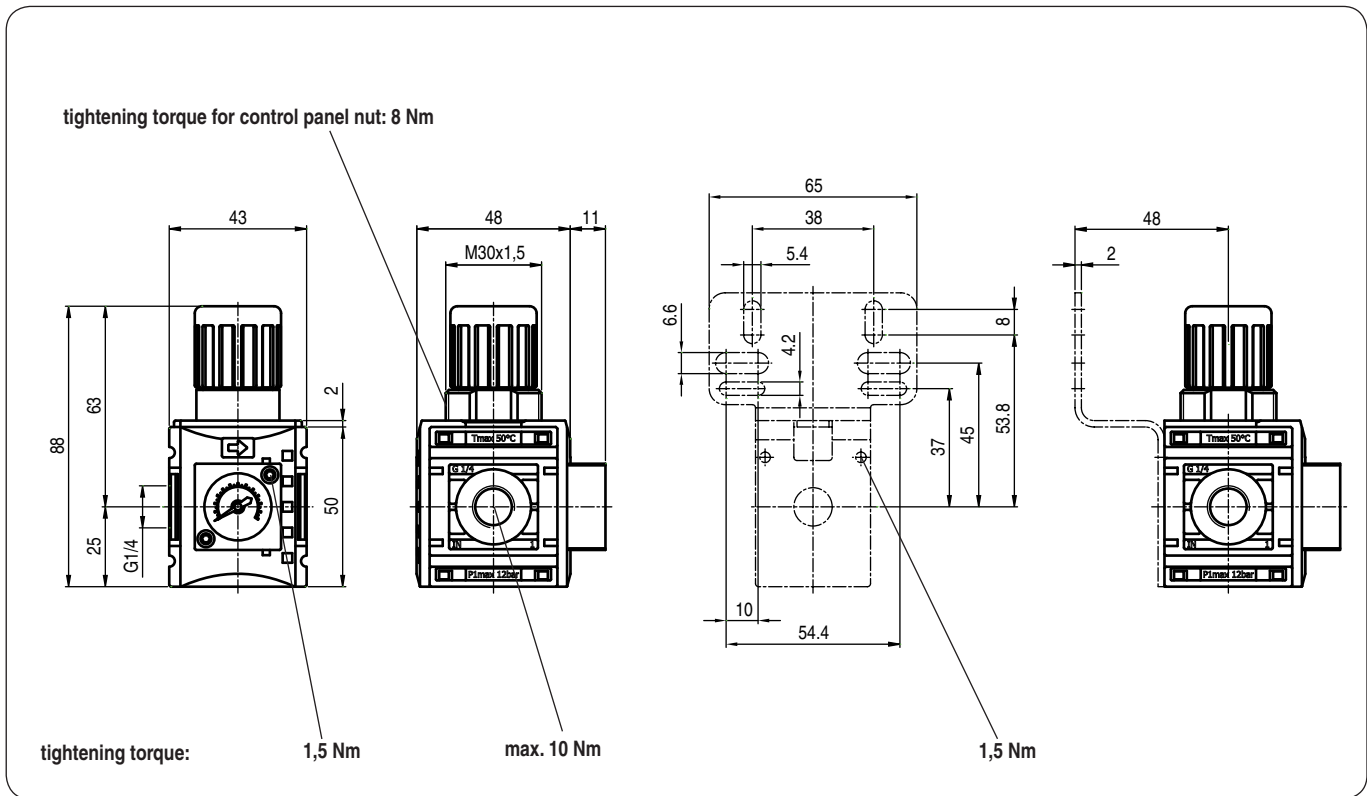
2 accessories

3 reduced pressure

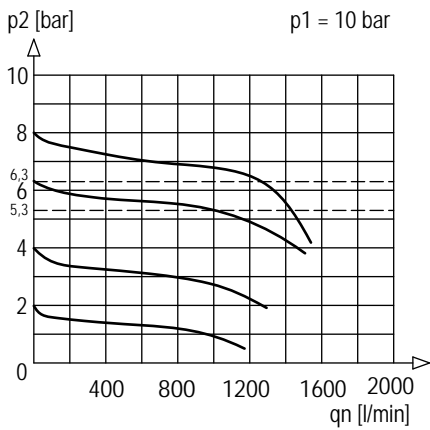
ordering example: KREG-014/8 G

1	port size	
	014	G 1/4
	014 NPT	1/4-18 NPT
2	accessories (see reverse side)	
	S	control panel nut
3	reduced pressure (see item table)	
	e.g. 8	0,5 - 8 bar

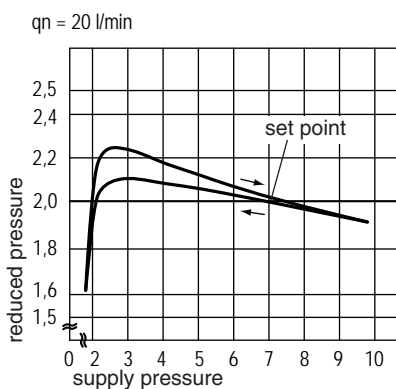
dimensions (mm)



flow characteristic



pressure characteristic



accessories 2

