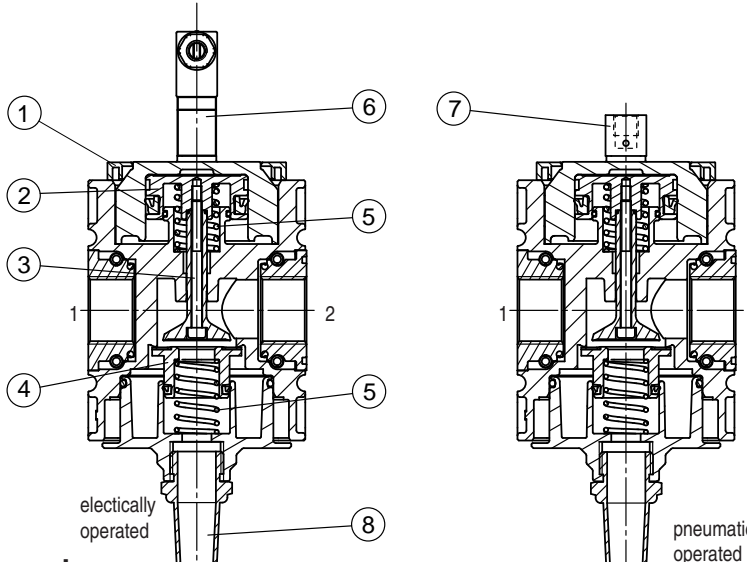


3/2-in line control electrically operated

FUTURA-SERIES

item	type	KSOV-434	KSOV-41
port size		G 3/4	G 1
exhaust		G 1/2	G 1/2
description		3/2 poppet valve	
mounting		arbitrary	
medium		compressed air, neutral gases	
medium- and ambient temperature		max. 50 °C	
supply pressure		Pe min. 2 bar Pe max. 10 bar	
voltage		24 V = ; 115V / 50Hz, 230V / 50Hz	
relative switch-on duration		100 %	
power		1 - 2,5 W with DC 3 VA with AC 50 Hz	
nominal flow rate		Qn 12500 l/min (Pe = 6 bar, Δp = 1 bar)	
operating		electrically standard, pneumatically	
protection class		IP 65 according to DIN 40050	
electrical connection		socket coupling EN 175301-803, form C / ISO 15217 poles 2+PE (included in scope of delivery)	
fixing		mounting bracket, wall mounting	
weight		0,677 kg	

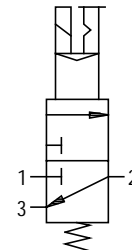
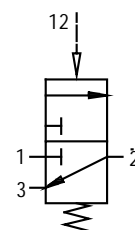



parts

no.	designation		material	order-no.
1	cover	DE.2-303	POM	---
2	piston	VK.4-435	brass - NBR	---
3	plunger	VK.4-436	brass - NBR	---
4	valve cone	S.55-8	brass - NBR	---
5	spring	S.55-17	stainless steel	---
6	pilot valve 24V incl. socket coupling	ZG.0-104		90060.0104
	sealing for pilot valve	ZG.0-1	NBR	90060.0001
7	Anschlussstück	DE.1-361	Al	---
8	silencer			---

pneumatically operated

electrically operated



series 4

ordering information

KSOV - * / ***

type

1 port size

2 accessories

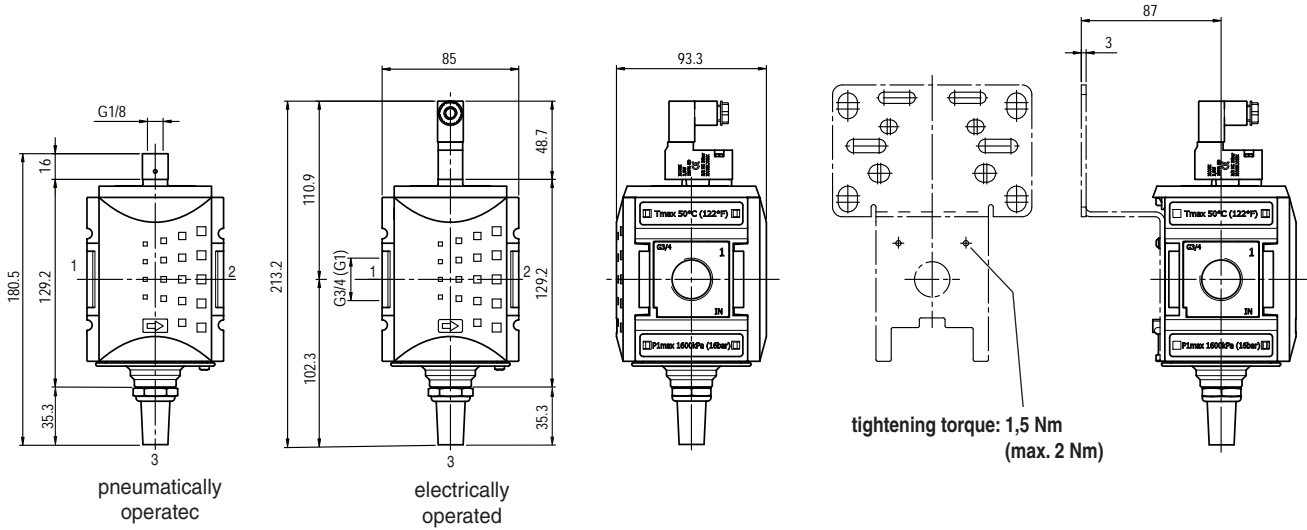
ordering example: KSOV-434/24

1	port size	
	434	G 3/4
	41	G 1
	434 NPT	3/4-14 NPT
	41 NPT	1 - 11 1/2 NPT
2	accessories (see reverse side)	
	24	electrically operated 24V=
	115	electrically operated 115V / 50Hz
	230	electrically operated 230V / 50Hz
	I	pneumatically operated
	C	with adapter for CNOMO solenoid valve

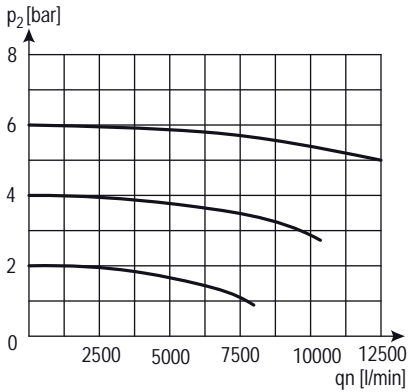
application information

- Two switch positions
- Basic position: input (1) closed, output (2) and exhaust (3) connected
- Operated: input (1) and output (2) connected, exhaust (3) closed
- Interlocking of several individual devices requires coupling kit(s) KKOP.4

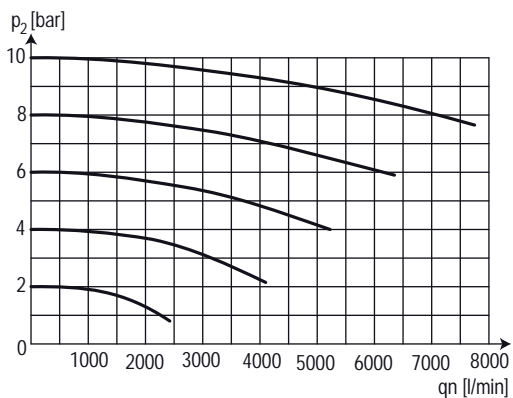
dimensions (mm)



flow characteristic (1 → 2)

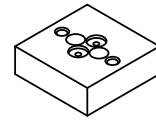


rear exhaust (2 → 3)



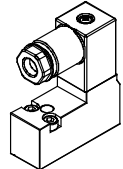
accessories 2

CNOMO adapter



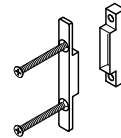
type: ESA.1-1303

pilot valve



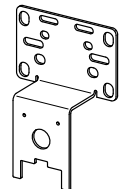
type: 24V=
115V / 50Hz
230V / 50Hz

coupling kit



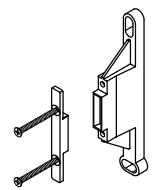
type: KKOP.4

mounting bracket with screws



type: KBW.4-1225

coupling kit wall mounting



type: KKOP.4W