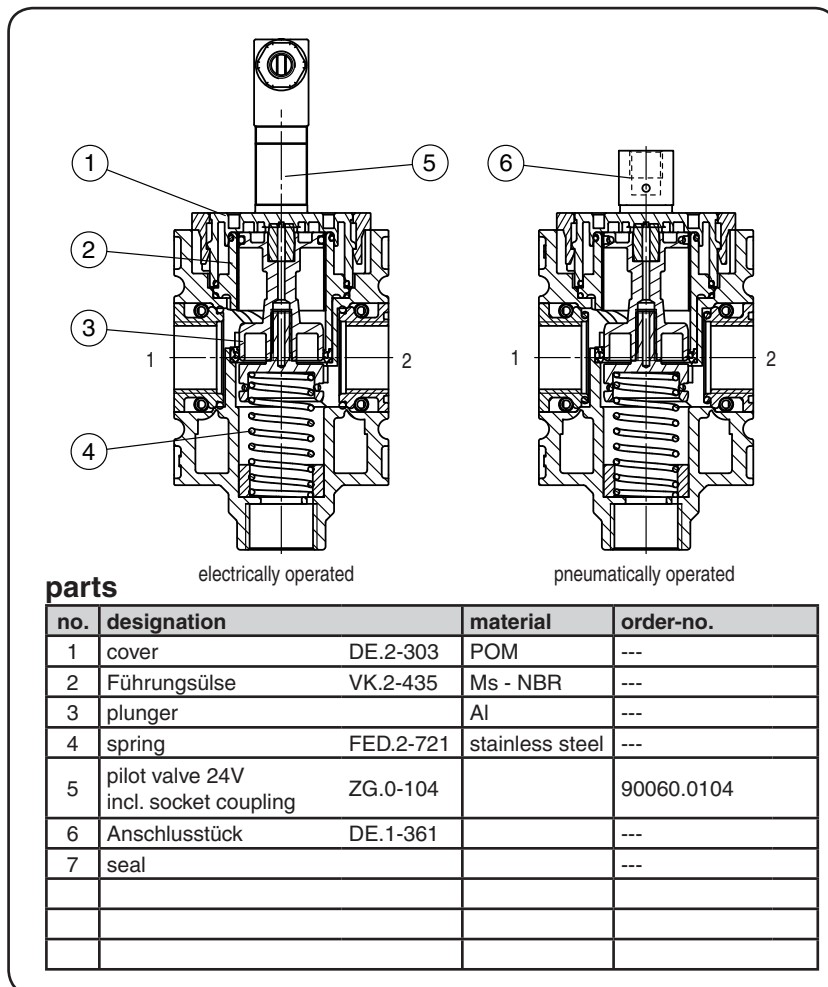


3/2-in line control electrically operated

FUTURA-SERIES

item	type	KSOV-238	KSOV-212
port size		G 3/8	G 1/2
exhaust		G 1/2	G 1/2
description		3/2 poppet valve	
mounting		arbitrary	
medium		compressed air, neutral gases	
medium- and ambient temperature		max. 50 °C	
supply pressure		Pe min. 2 bar Pe max. 10 bar	
voltage		24 V = ; 115V / 50Hz, 230V / 50Hz	
relative switch-on duration		100 %	
power		1 - 2,5 W with DC 3 VA with AC 50 Hz	
nominal flow rate		Qn 4500 l/min (Pe = 6 bar, Δp = 1 bar)	
operating		electrically standard, pneumatically	
protection class		IP 65 according to DIN 40050	
electrical connection		socket coupling EN 175301-803, form C / ISO 15217 poles 2+PE (included in scope of delivery)	
fixing		mounting bracket, wall mounting	
weight		0,400 kg	

electrically operated pneumatically operated

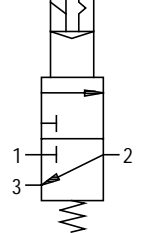
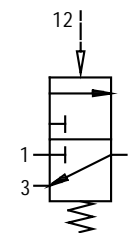
no.	designation	material	order-no.	
1	cover	DE.2-303	POM	---
2	Führungssäule	VK.2-435	Ms - NBR	---
3	plunger		Al	---
4	spring	FED.2-721	stainless steel	---
5	pilot valve 24V incl. socket coupling	ZG.0-104		90060.0104
6	Anschlussstück	DE.1-361		---
7	seal			---

application information

- Two switch positions
- Basic position: input (1) closed, output (2) and exhaust (3) connected
- Operated: input (1) and output (2) connected, exhaust (3) closed
- Interlocking of several individual devices requires coupling kit(s) KKOP.2

pneumatically operated

electrically operated



series 2

ordering information

KSOV - * / ***

type

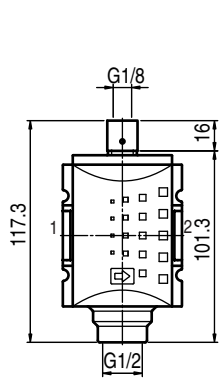
1 port size

2 accessories

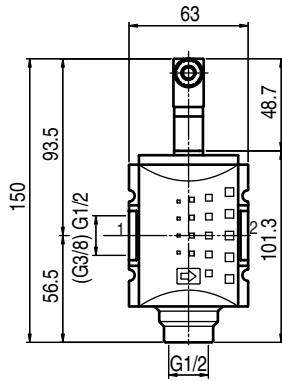
ordering example: KSOV-212/24

1 port size	
238	G 3/8
212	G 1/2
238 NPT	3/8-18 NPT
212 NPT	1/2-14 NPT
2 accessories (see reverse side)	
24	electrically operated 24V=
115	electrically operated 115V / 50Hz
230	electrically operated 230V / 50Hz
I	pneumatically operated
C	with adapter for CNOMO solenoid valve

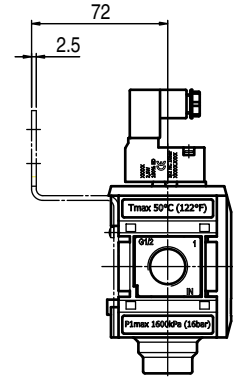
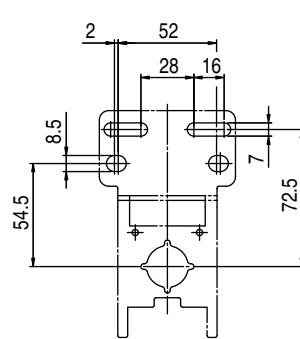
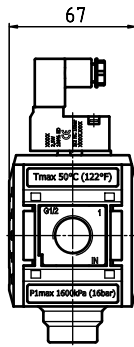
dimensions (mm)



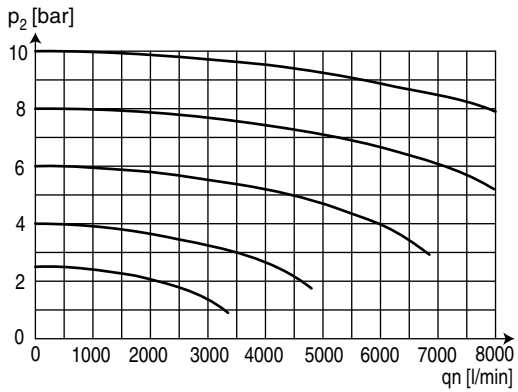
pneumatically
operated



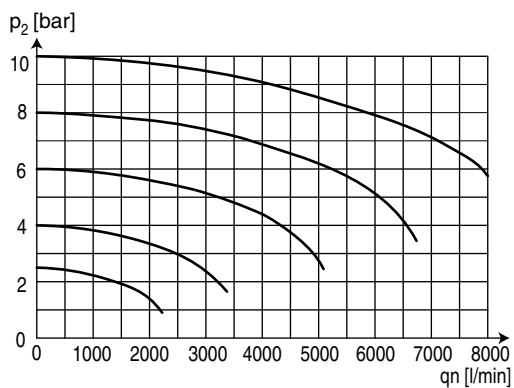
electrically
operated



flow characteristic (1 → 2)

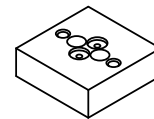


rear exhaust (2 → 3)



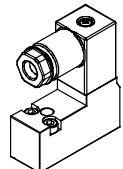
accessories 2

CNOMO adapter



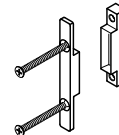
type: ESA.1-1303

pilot valve



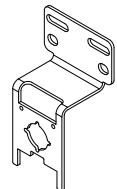
type: 24V=
115V / 50Hz
230V / 50Hz

coupling kit



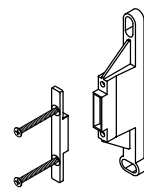
type: KKOP2

mounting bracket
with screws



type: KBW.2-1225

coupling kit
wall mounting



type: KKOP.2W