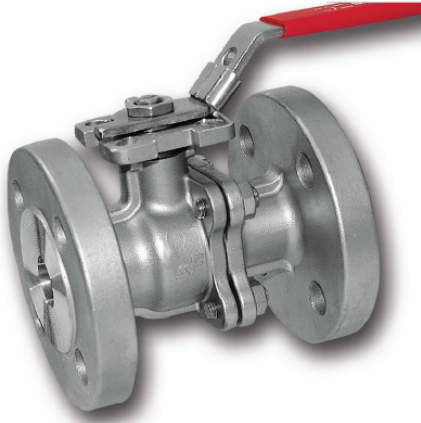


2 PARÇALI FLANŞLI KÜRESEL VANALAR AVAK-2F SERİSİ



MODEL

AVAK-2F Serisi

ÖLÇÜ

DN 15 - 200

BASINÇ SINIFI

PN 16 / PN 40

SICAKLIK DEĞERLERİ

-35 °C - 190 °C

SIZDIRMAZLIK ELEMANLARI

R-PTFE

GÖVDE MALZEMESİ

AISI 316

KÜRE MALZEMESİ

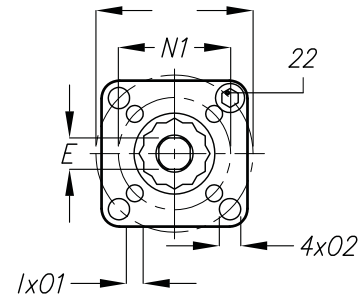
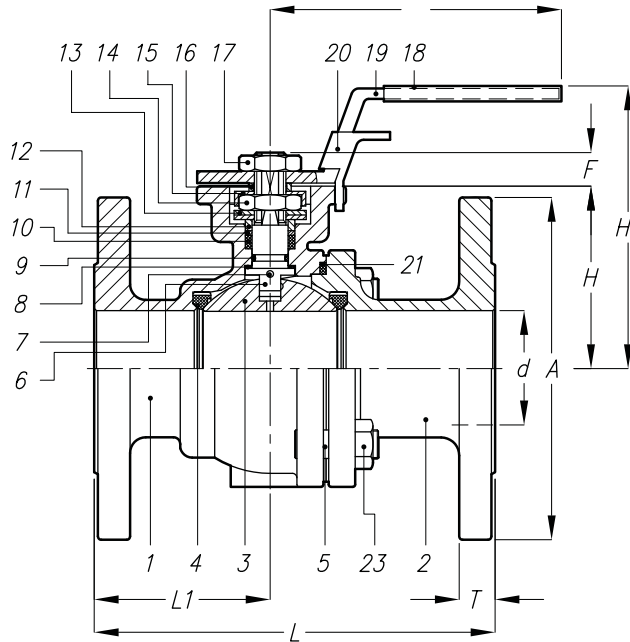
AISI 316

KUMANDA ŞEKİLLERİ

Kol Kumandası, Pnömatik Aktuatörlü, Elektrik Aktuatörlü
Dişli Kutulu (Gear Box)

UYGULAMA ALANLARI

Su Tesisleri, Kimya ve Petro Kimya Tesisleri,
Gıda Endüstrisi, Madenler, Kağıt Endüstrisi,
Enerji Santralleri, Demir Çelik Fabrikaları, Jeotermal



DN	PN16 PN40		PN16 PN40		PN16 PN40		PN16 PN40		PN16 PN40		PN16 PN40		PN16 PN40		PN16 PN40		PN16 PN40		PN16 PN40	
	d	A	A	E	F	H	H1	L	L1	L1	M	N1	N2	1	2	T	T	Kg	Kg	Kg
15	15	95	95	9	9	48	78	115		49,5	145	36	42	6	6	16	16			2,5
20	22	105	105	9	9	53	84	120		54	145	36	42	6	6	18	18			3
25	25	115	115	11	11	58,5	90,5	125		56	175	42	50	6	7	18	18			4,5
32	32	140	140	11	11	71	103	130		57,4	175	42	50	6	7	18	18			5,5
40	38	150	150	14	14	76	111	140		58	194	50	70	7	9	18	18			7
50	50	165	165	14	14	85	120	150		63	194	50	70	7	9	20	20			10
65	63,5	185	185	17	17	101,5	150	170	69	64	265	70	102	9	11	20	22	14	14	14
80	76	200	200	17	17	111,5	160	180	74,5	69,5	265	70	102	9	11	20	24	18	18	18
100	100	220	235	22	22	140	182	190	83	78	400		102		11	20	24	25	30	30
125	125	250	270	27	27	183	260	325	153	160	600		125		14	22	26	60	63	63
150	150	285	300	27	27	202	280	350	162	176	800		125		14	22	28	72	74	74
200	200	340	375	27	27	252,5	279,5	400	191	211			125		14	24	34	127	155	155