

BIÇAKLI VANALAR AB SERİSİ



MODEL

AB Serisi

ÖLÇÜ

DN 50-600

BASINÇ SINIFI

PN6 / PN 10 / PN 16 / PN 25 / Class 150

SICAKLIK DEĞERLERİ

90 °C / 210 °C Sızdırmazlık elamanlarına göre

SIZDIRMAZLIK ELEMANI

EPDM / NBR / VITON / SİLİKON

GÖVDE MALZEMESİ

GGG50 / Karbon Çelik / AISI 316 / AISI 316 Ti / Duplex

BIÇAK MALZEMESİ

AISI 304 / AISI 316

KUMANDA ŞEKİLLERİ

Manuel, Pnömatik Aktuatörlü, Elektrik Aktuatörlü, Dişli Kutulu (Gear Box), Hidrolik Aktuatörlü

UYGULAMA ALANLARI

Kimya tesisleri, Pompa İstasyonları, Gıda, Atık Su, Madencilik

ÖZELLİKLER

- * Çift yönlü sızdırmaz, wafer dizayn bıçaklı sürgülü vana.
- * Düşük basınç kaybı ile yüksek akış hızı sağlar.
- * Tek parçadan oluşan döküm gövde dizaynı.
- * Akışkana göre değişen conta ve salmstra çeşitleri.
- * Bakım gerektirmez.



GÖVDE SEÇENEKLERİ

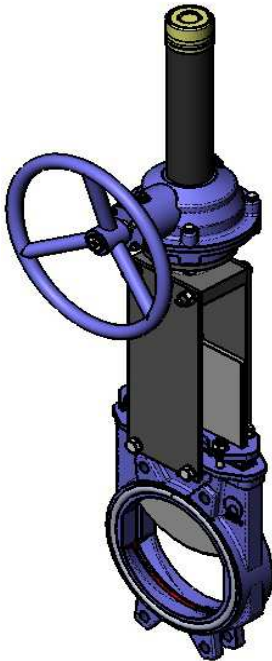
MALZEME	AÇIKLAMA	STANDART BOYA
Sfero Döküm Demir	EN-GJS 500	EPOXY RAL 5015
Karbon Çelik	ASTM A216 WCB	EPOXY RAL 5015
Paslanmaz Çelik	ASTM A351 CF8M (AISI 316)	
Paslanmaz Çelik	AISI 316 Ti	
Duplex Paslanmaz Çelik		
254 SMO	UNS S31254	
Uranus B6	AISI 904L	

BIÇAK SEÇENEKLERİ SEÇENEKLERİ

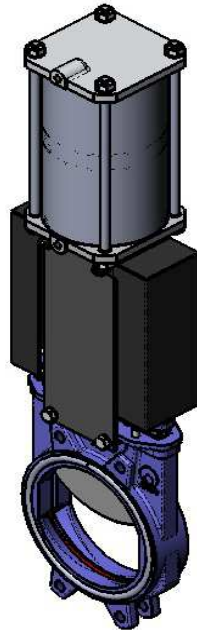
MALZEME	AÇIKLAMA
Paslanmaz Çelik	AISI 304 (Dökme Demir Gövde)
Paslanmaz Çelik	AISI 316 (Paslanmaz Çelik Gövde)

CONTA SEÇENEKLERİ

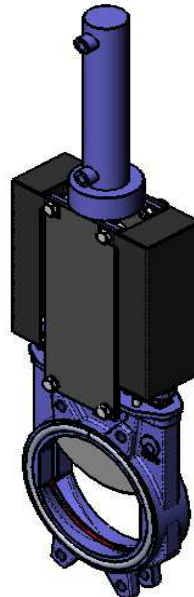
MALZEME	ÇALIŞMA SICAKLIĞI	UYGULAMA YERLERİ
EPDM (E)	-10°C / +90°C	Su, Hafif Kimyasallar
Nitrile (N)	-10°C / +90°C	Hidrokarbonlar, Yağlar
Viton (V)	-10°C / +200°C	Hidrokarbonlar, Solventler
Silicone (S)	-10°C / +200°C	Gıdalar, İlaç



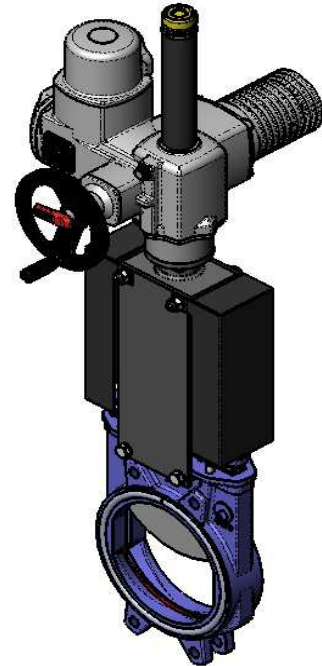
Redüktör
Kumandalı



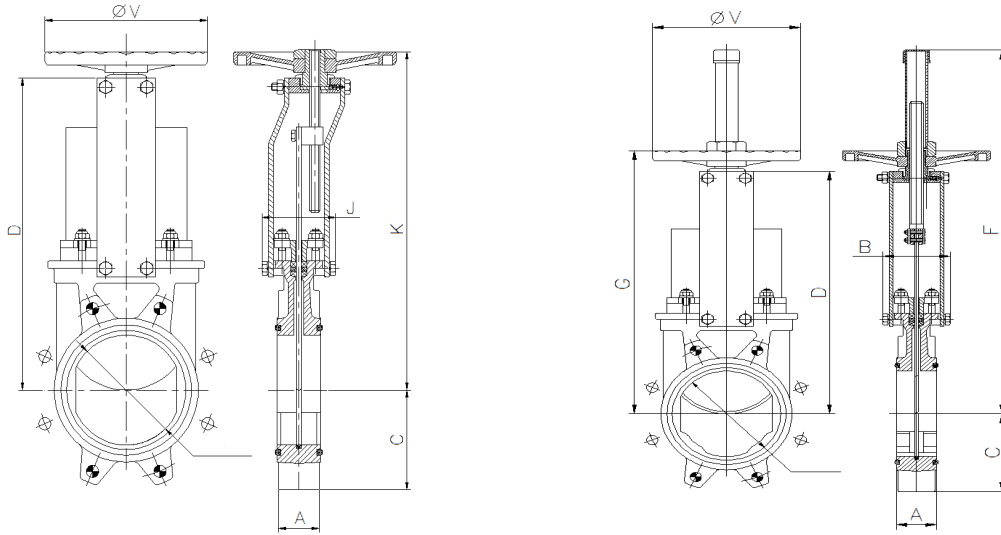
Pnömatik



Hidrolik



Elektrik Aktuatörlü

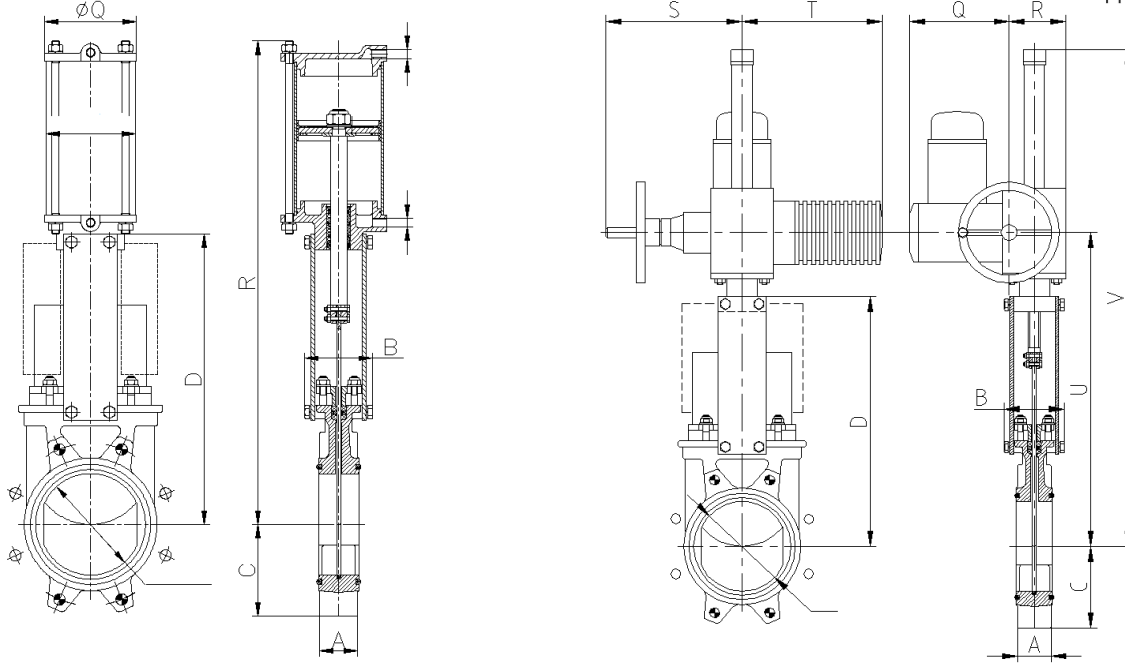


MANUEL KUMANDALI

DN	ΔP Kg/cm ²	Draw Nw	Tork Nm	A	C	D	J	K	ØV	Ağırlık Kg
50	10	1143	2,64	40	61	241	101	280	225	7
65	10	1952	4,45	40	68	268	101	308	225	8
80	10	2957	6,76	50	91	294	101	333	225	9
100	10	4617	10,50	50	104	334	101	373	225	11
125	10	7213	16,50	50	118	367	111	407	225	13
150	10	7290	16,50	60	130	419	111	458	225	17
200	8	12975	37,10	60	159	525	128	578	325	28
250	6	14522	41,40	70	196	626	128	679	325	40
300	6	20942	59,80	70	230	726	128	779	380	56
350	5	22810	88,50	96	254	797	305	906	450	94
400	5	29879	115,90	100	287	903	305	1012	450	116
450	3	28461	110,30	106	304	989	305	1098	450	162
500	3	35333	137,10	110	340	1101	305	1210	450	187
600	3	51235	198,60	110	398	1307	305	1416	450	260

YÜKSELEN MİLLİ MANUEL KUMANDA

DN	ΔP (Kg/cm ²)	Draw Nw	Tork Nm	A	B	C	D	F	G	ØV	Ağırlık Kg
50	10	1143	2,64	40	91	61	241	410	280	225	7
65	10	1952	4,45	40	91	68	268	437	308	225	8
80	10	2957	6,76	50	91	91	294	463	333	225	9
100	10	4617	10,50	50	91	104	334	503	373	225	11
125	10	7213	16,50	50	101	118	367	586	407	225	13
150	10	7290	16,50	60	101	130	419	638	458	225	17
200	8	12975	37,10	60	118	159	525	816	578	325	28
250	6	14522	41,40	70	118	196	626	1017	679	325	40
300	6	20942	59,80	70	290	230	726	1017	779	380	56
350	5	22810	88,50	96	290	254	797	1337	906	450	94
400	5	29879	115,90	100	290	287	903	1443	1012	450	116
450	3	28461	110,30	106	290	304	989	1629	1098	450	162
500	3	35333	137,10	110	290	340	1101	1741	1210	450	187
600	3	51235	198,60	110	290	398	1307	2047	1416	450	260



ÇİFT ETKİLİ PNOMATİK AKTUATÖLÜ

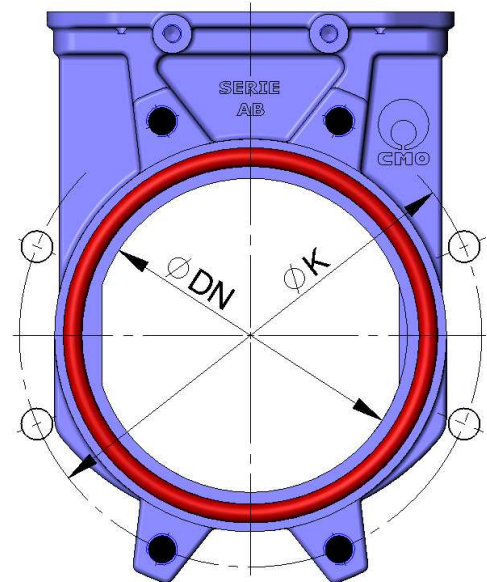
DN	ΔP (Kg/cm ²)	Draw Nw	A	B	C	D		Ø CIL	Ø D	Ø	S B S P	Ağırlık Kg
50	10	1143	40	91	61	241	400	80	20	90		7
65	10	1952	40	91	68	268	442	80	20	90		8
80	10	2957	50	91	91	294	483	80	20	110		9
100	10	4617	50	91	104	334	546	100	20	135		12
125	10	7213	50	101	118	367	630	125	25	170		18
150	10	7290	60	101	130	419	692	125	25	170		22
200	8	12975	60	118	159	525	869	160	30	215		37
250	6	14522	70	118	196	626	1032	200	30	270	3/8	58
300	6	20942	70	290	230	726	1182	200	30	270	3/8	72
350	5	22810	96	290	254	797	1379	250	40	382	3/8	130
400	5	29879	100	290	287	903	1535	250	40	382	3/8	148
450	3	28461	106	290	304	989	1677	300	45	382		235
500	3	35333	110	290	340	1101	1839	300	45	444		260
600	3	51235	110	290	398	1307	2145	300	45	508		334

ELEKTRİK AKTUATORLU

DN	ΔP (Kg/cm ²)	Draw Nw	Tork Nm	A	B	C	D	Q	R	S	T	U	V	Ağırlık Kg
50	10	1143	2,64	40	91	61	241	197	102	234	265	347	587	24
65	10	1952	4,45	40	91	68	268	197	102	234	265	374	614	25
80	10	2957	6,76	50	91	91	294	197	102	234	265	400	640	26
100	10	4617	10,50	50	91	104	334	197	102	234	265	440	680	27
125	10	7213	16,50	50	101	118	367	197	102	234	265	473	713	30
150	10	7290	16,50	60	101	130	419	197	102	234	265	525	765	32
200	8	12975	37,10	60	118	159	525	197	102	234	265	640	880	42
250	6	14522	41,40	70	118	196	626	197	102	234	265	741	981	55
300	6	20942	59,80	70	290	230	726	197	102	234	265	841	1141	72
350	5	22810	88,50	96	290	254	797	197	115	256	282	944	1347	99
400	5	29879	115,90	100	290	287	903	197	115	256	282	1050	1550	136
450	3	28461	110,30	106	290	304	989	222	153	325	385	1147	1847	166
500	3	35333	137,10	110	290	340	1101	222	153	325	385	1259	1959	245
600	3	51235	198,60	110	290	398	1307	222	153	325	385	1465	2165	362

EN1092-2 PN10

DN	ΔP (Kg/cm ²)	A	B	Mertic	P	$\varnothing K$
50	10	4	-	M16	8	125
65	10	4	-	M16	8	145
80	10	4	4	M16	9	160
100	10	4	4	M16	9	180
125	10	4	4	M16	9	210
150	10	4	4	M20	10	240
200	8	4	4	M20	10	295
250	6	6	6	M20	12	350
300	6	6	6	M20	12	400
350	5	12	4	M20	21	460
400	5	12	4	M24	21	515
450	3	16	4	M24	22	565
500	3	16	4	M24	22	620
600	3	16	4	M27	22	725

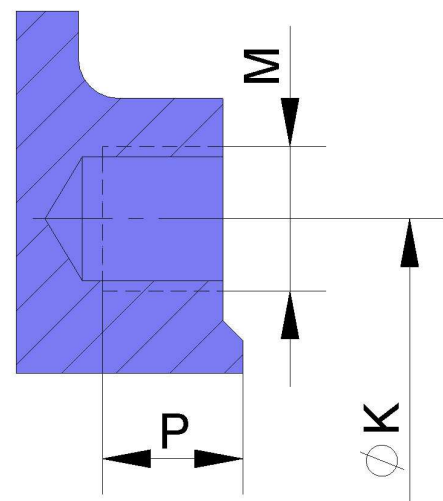


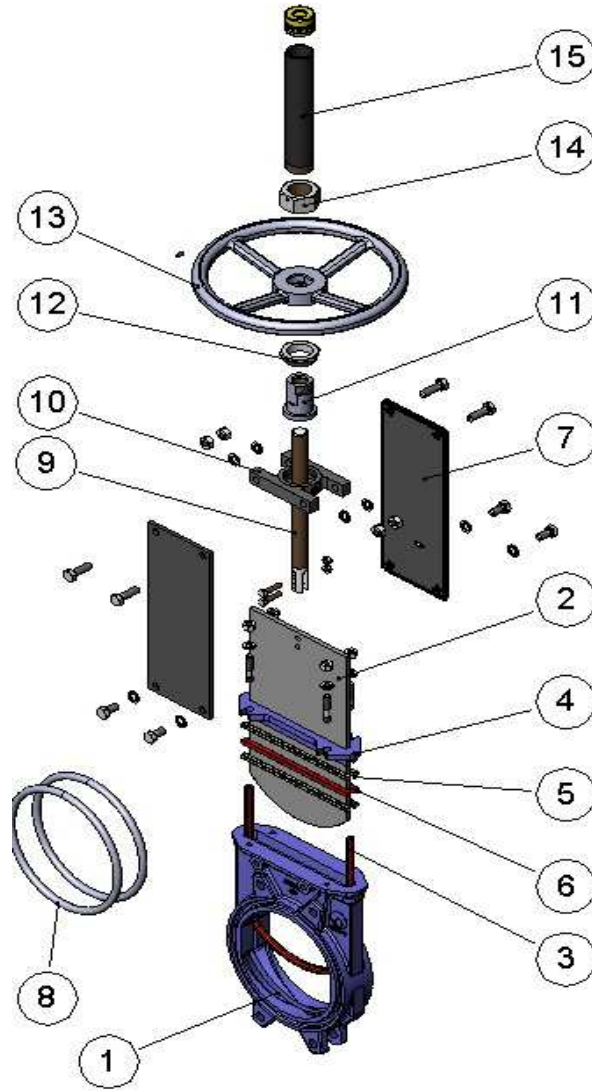
A BLIND TAPED HOLES

B THROUGH HOLE

ANSI B16, CLASS 150

DN	ΔP (Kg/cm ²)	A	B	R UNC	P	$\varnothing K$
50	10	4	-	5/8	8	120,6
65	10	4	-	5/8	8	139,7
80	10	4	-	5/8	9	152,4
100	10	4	4	5/8	9	190,5
125	10	4	4	3/4	9	215,9
150	10	4	4	3/4	10	241,3
200	8	4	4	3/4	10	298,4
250	6	6	6	7/8	12	361,9
300	6	6	6	7/8	12	431,8
350	5	8	4	1"	21	476,2
400	5	12	4	1"	21	539,7
450	3	12	4	1 1/8	22	577,8
500	3	16	4	1 1/8	22	635,0
600	3	16	4	1 1/4	22	749,3





MD	BÖLÜM	MALZEME
1	Body	GJL-250 CF8M
2	Gate	AISI 304 (GJL-250 Body) AISI 316 (CF8M Body)
3	Seat	EPDM
4	Packing Gland	GJS-500 CF8M
5	Packing	SYNT+PTFE
6	O-ring Seal	EPDM
7	Support Plates	S275JR
8	O-ring	Nitrile
9	Stem	AISI 303
10	Yoke	Steel
11	Stem Nut	Bronze
12	Check Nut	St44.2+ZINC
13	Handwheel	Nodular Cast Iron
14	Nut	Steel
15	Hood	Steel