

SOLENOİD VALFLER 40 SERİSİ



STANDART TİP

Vana normalde kapalıdır. NC. Enerji verildiğinde, basınç pilot deliği üzerinden ayrılarak diyaframın diğer tarafına geçer, pistonu contadan ayırır.

Doğru çalışması için; fark basıncı için belirtilen minimum basınç her zaman gereklidir.

MODEL

40 Serisi

ÖLÇÜ

G 1/4 - G2

TANIM

Diyafram dizayn.

ORTAM

Sıvı akışkanlar, nötr gazlar.

KONTROL ŞEKLİ

Piloy uyarılı.

VİSKOZİTE

22 mm²/s

AKIŞKAN SICAKLIĞI

-10, +80°C

ORTAM SICAKLIĞI

+35°C

BASINÇ

0,3 – 20 Bar

GÖVDE MALZEMESİ

Pirinç / AISI 316 Ti

SIZDIRMAZLIK

NBR

BESLEME VOLTAJİ

AC: 24, 42, 110, 230 V 50Hz

DC: 24, 110, 205 V

KORUMA SINIFI

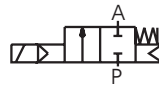
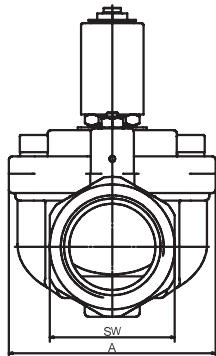
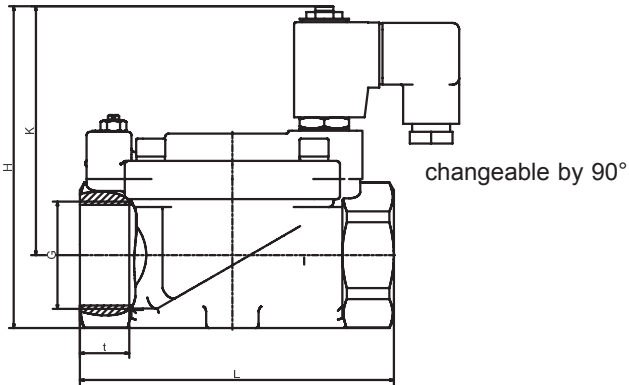
DIN 40050'ye göre IP 65

KABLO BAĞLANTISI

DIN 43650 - plug

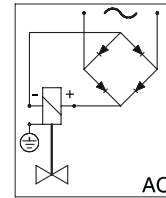
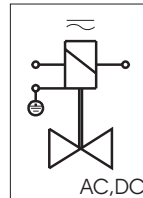
DN	Orifice	Flow rate	Max. pressure reg. solenoid type			
			.182	.032	.012-NO	Ex 2G Eex m IIT .148
G	Ømm	m ³ /h				
1/4	13,5	1,6	0,3-20	0,3-20	0,3-20	0,3-20
3/8	13,5	3,3	0,3-20	0,3-20	0,3-20	0,3-20
1/2	13,5	3,8	0,3-20	0,3-20	0,3-20	0,3-20
3/4	27,5	11,0	0,3-16	0,3-20	0,3-20	0,3-20
1	27,5	13,0	0,3-16	0,3-20	0,3-20	0,3-20
1 1/4	40	30,0	-	0,5-16	0,5-16	0,5-16
1 1/2	40	23,0	-	0,5-16	0,5-16	0,5-16
2	50	36,0	-	0,5-16	0,5-16	0,5-16

Dimensional drawing of standard type



normally closed - NC.

Connection diagram



For AC and DC.

With rectifier for AC connection.

Grounding or earthing of the protective circuit in accordance with regulations of the responsible electric supply company.

Appropriate protection according to the power-consumption.

Magnet Solenoid	.182		.032/ .148/ .012			
	4021-4023	4024-4025	4021-4023	4024-4025	4026-4027	4028
Type	4021-4023	4024-4025	4021-4023	4024-4025	4026-4027	4028
G	1/4-1/2	3/4-1	1/4-1/2	3/4-1	5/4-6/4	2
A	V.45*45	V.70*70	V.45*45	V.70*70	V.96*96	V.112*112
H	95	106	105	121	143	161
K	75	82	90	97	110	121
L	67	96	67	96	140	168
SW	27	41	27	41	58	70
T	12	16	12	16	22	25
Pg	11	11	11	11	11	11
Kg	0,8	1,1	0,8	1,2	2,8	3,9