

PİSTONLU VALFLER 22 SERİSİ



MODEL

22 Serisi

ÖLÇÜ

DN 15 - 100

TANIM

Popet Dizayn

ORTAM

Sıvı akışkanlar Nötr gazlar

KONTROL ŞEKLİ

Dıştan direkt kontrol

VİSKOZİTE

600 mm²/s

AKIŞKAN SICAKLIĞI

0, +80°C / -40°C , +200°C

ORTAM SICAKLIĞI

+60°C

BASINÇ

1 – 40 Bar

GÖVDE MALZEMESİ

Döküm / Çelik / Paslanmaz Çelik

SIZDIRMAZLIK

NBR / PTFE

BESLEME BASINCI

2 -10 Bar

STANDART TİP

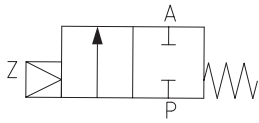
Vana enerjisizken yay gücü ile kapalı konumdadır. Aktuatör basınçlandığında pistonu ve aynı anda valf kafasını çeker ve vana açar.

Bu tip valar yay kuvveti ile açma fonksiyonuna ek olarak çift etkili aktuatör seçeneği de vardır.

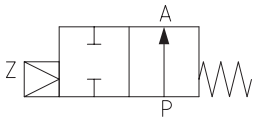
DN	Orifice Ømm	Flow rate m ³ /h	Max. pressure range with 6 bar control pressure								
			7005	7008	7013	7015	7058	7063	8005	8008	8013
15	20	6,8	0-16	0-16		0-13	0-16		0-16	0-16	
20	20	6,8	0-16	0-16		0-13	0-16	0-16	0-16	0-16	
25	25	11	0-12	0-16		0-8	0-15	0-16	0-12	0-16	
32	32	18	0-8	0-16		0-5	0-9	0-16	0-8	0-16	0-16
40	40	27	0-5	0-14	0-16	0-3	0-6	0-16	0-5	0-15	0-16
50	50	43	0-3	0-9	0-16	0-2	0-4	0-16	0-3	0-9	0-16
65	65	71		0-6	0-13		0-1	0-10		0-5	0-13
80	80	111		0-4	0-9			0-5		0-3	0-9
100	100	173		0-2,5	0-6			0-3		0-2	0-6

** Tablo Standart gövde içindir
Çelik / Paslanmaz Çelik modelleri için sorunuz

Functions

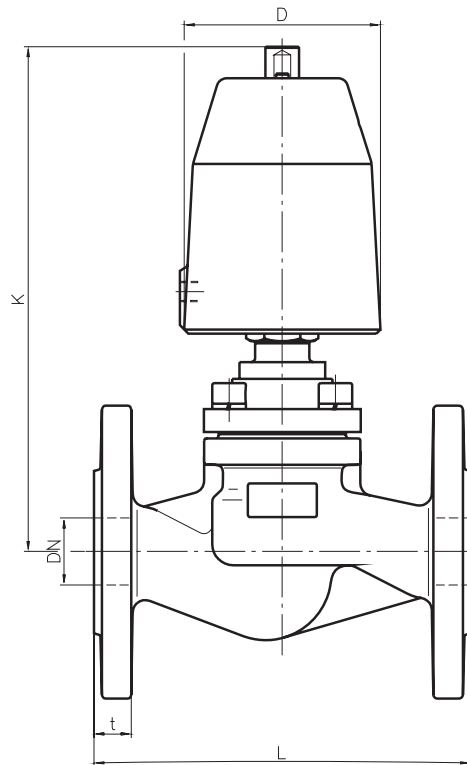


Actuator 7015, 7058, 7063 Closing against flow direction in rest-position closed - NC.

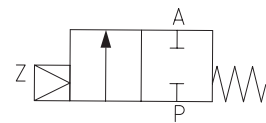


Actuator 8005, 8008, 8013 closing against flow direction in rest-position open - NO.

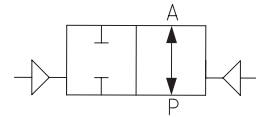
Dimensional drawing of standard type



Functions



Actuator 7005, 7008, 7013 closing with flow direction in rest-position closed - NC.



Actuator 9005, 9008, 9013 double acting function for any flow direction.

Actuator	7005					7008							7013			
	Type	2201	2202	2203	2204	2205	2203	2204	2205	2206	2207	2208	2209	2210	2211	2212
DN	15	20	25	32	40	25	32	40	50	65	80	100	50	65	80	100
D	62	62	62	62	62	94	94	94	94	94	94	94	145	145	145	145
K	220	220	230	240	250	250	270	290	310	320	330	340	370	380	390	400
L	130	150	160	180	200	160	180	200	230	290	310	350	230	290	310	350
t	16	18	18	18	18	18	18	18	20	22	24	24	20	22	22	24
Kg	3,5	5,0	6,0	8,0	9,5	7	10,0	11	15,0	25,0	30,0	45,0	49	29	35	50