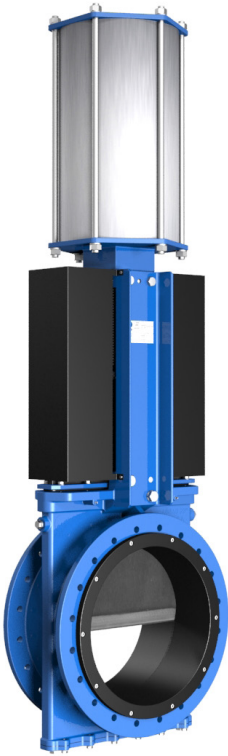


BIÇAKLI VANALAR GA SERİSİ



MODEL

GA Serisi

ÖLÇÜ

DN 50-1000

BASINÇ SINIFI

PN6 / PN 10 / PN 16 / PN 25 / Class 150 / JIS

SICAKLIK DEĞERLERİ

90 °C / 200 °C Sızdırmazlık elamanlarına göre

SIZDIRMAZLIK ELEMANI

EPDM / NBR / VITON / NR (Natural Rubber)

GÖVDE MALZEMESİ

GGG50 / AISI316 / Karbon Çelik / AISI 316 Ti / Duplex

BIÇAK MALZEMESİ

AISI 304 / AISI 316

KUMANDA ŞEKİLLERİ

Manuel, Pnömatik Aktuatörlü, Elektrik Aktuatörlü, Dişli Kutulu (Gear Box), Hidrolik Aktuatörlü

UYGULAMA ALANLARI

Maden, Enerji Santralleri, Jeotermal, Elektrik Santralleri, Kimya, Atık Su

ÖZELLİKLER

- * Çift yönlü sızdırmaz, wafer dizayn bıçaklı sürgülü vana.
- * Düşük basınç kaybı ile yüksek akış hızı sağlar.
- * Tek parçadan oluşan monoblok gövde dizaynı.
- * Akışkana göre değişen conta ve salmstra çeşitleri.
- * Hat üzerinde değiştirilebilir conta.
- * Bakım gerektirmez.



GÖVDE SEÇENEKLERİ

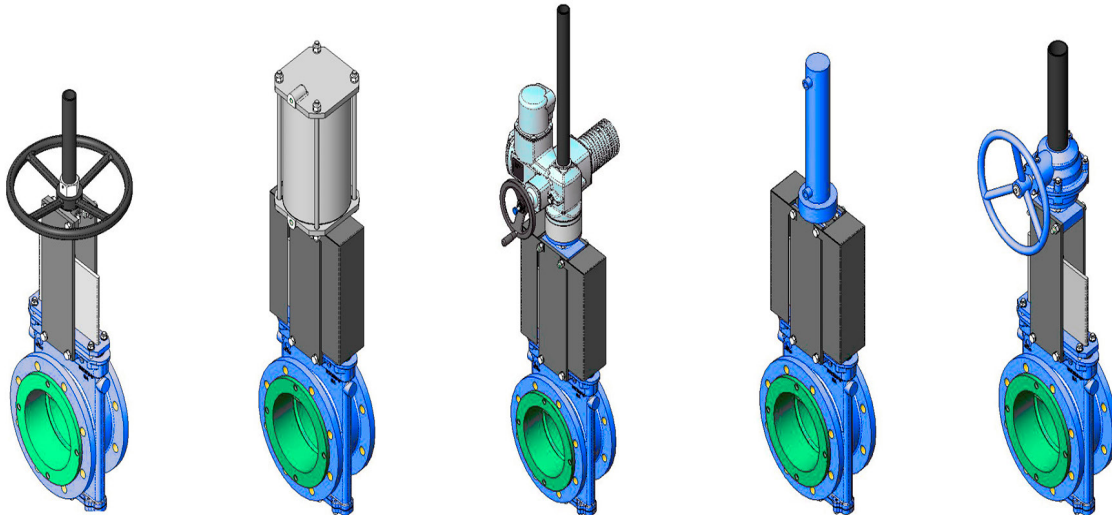
MALZEME	AÇIKLAMA	STANDART BOYA
Sfero Döküm Demir	EN-GJS 500	EPOXY RAL 5015
Karbon Çelik	ASTM A216 WCB	EPOXY RAL 5015
Paslanmaz Çelik	ASTM A351 CF8M (AISI 316)	
Paslanmaz Çelik	AISI 316 Ti	
Duplex Paslanmaz Çelik		
254 SMO	UNS S31254	
Uranus B6	AISI 904L	

BIÇAK SEÇENEKLERİ SEÇENEKLERİ

MALZEME	AÇIKLAMA
Paslanmaz Çelik	AISI 304 (Dökme Demir Gövde)
Paslanmaz Çelik	AISI 316 (Paslanmaz Çelik Gövde)

CONTA SEÇENEKLERİ

MALZEME	ÇALIŞMA SICAKLIĞI	UYGULAMA YERLERİ
Natural Rubber (NR)	-10°C / +90°C	Genel, Çamur Uygulamaları
EPDM (E)	-10°C / +90°C	Su, Hafif Kimyasallar
Nitrile (N)	-10°C / +90°C	Hidrokarbonlar, Yağlar
Viton (V)	-10°C / +200°C	Hidrokarbonlar, Solventler



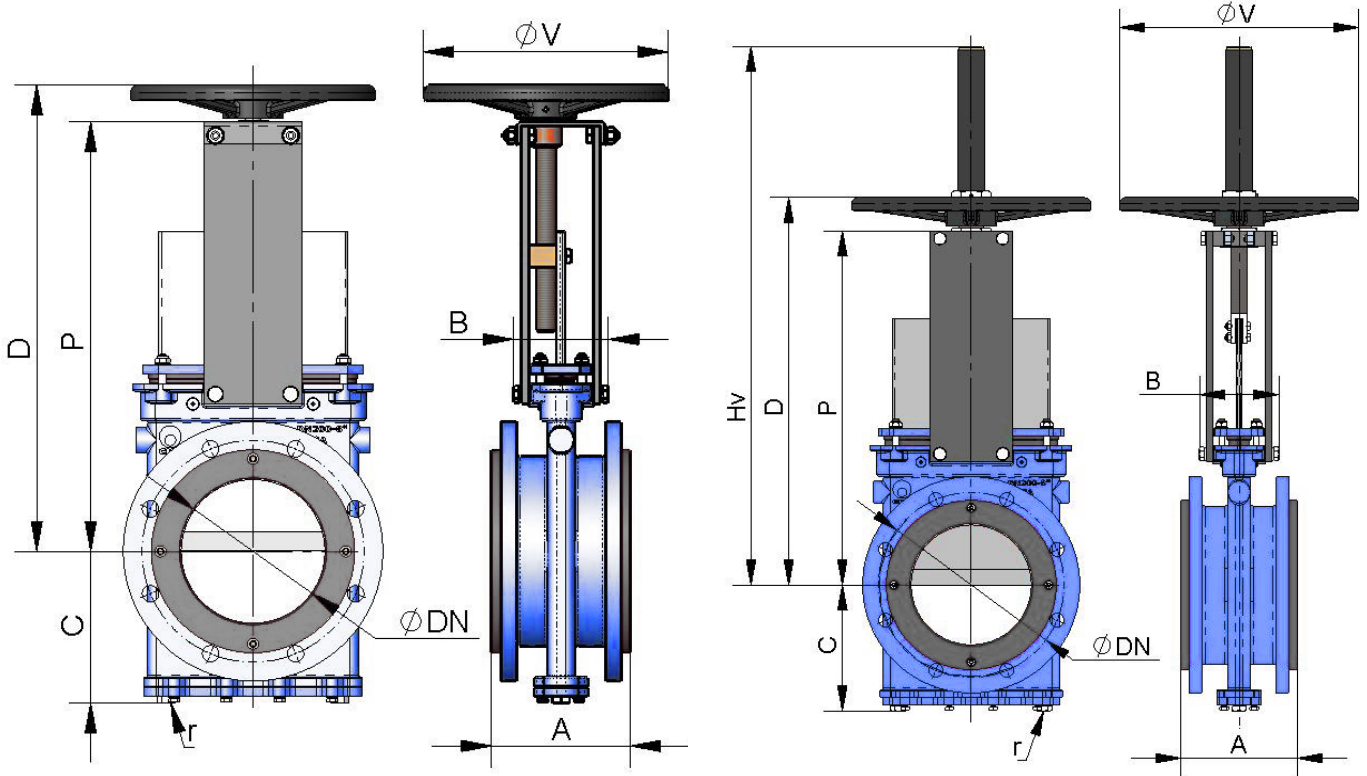
El Volanlı

Pnomatik

Elektrik Aktuatörlü

Hidrolik

Redüktör
Kumandalı

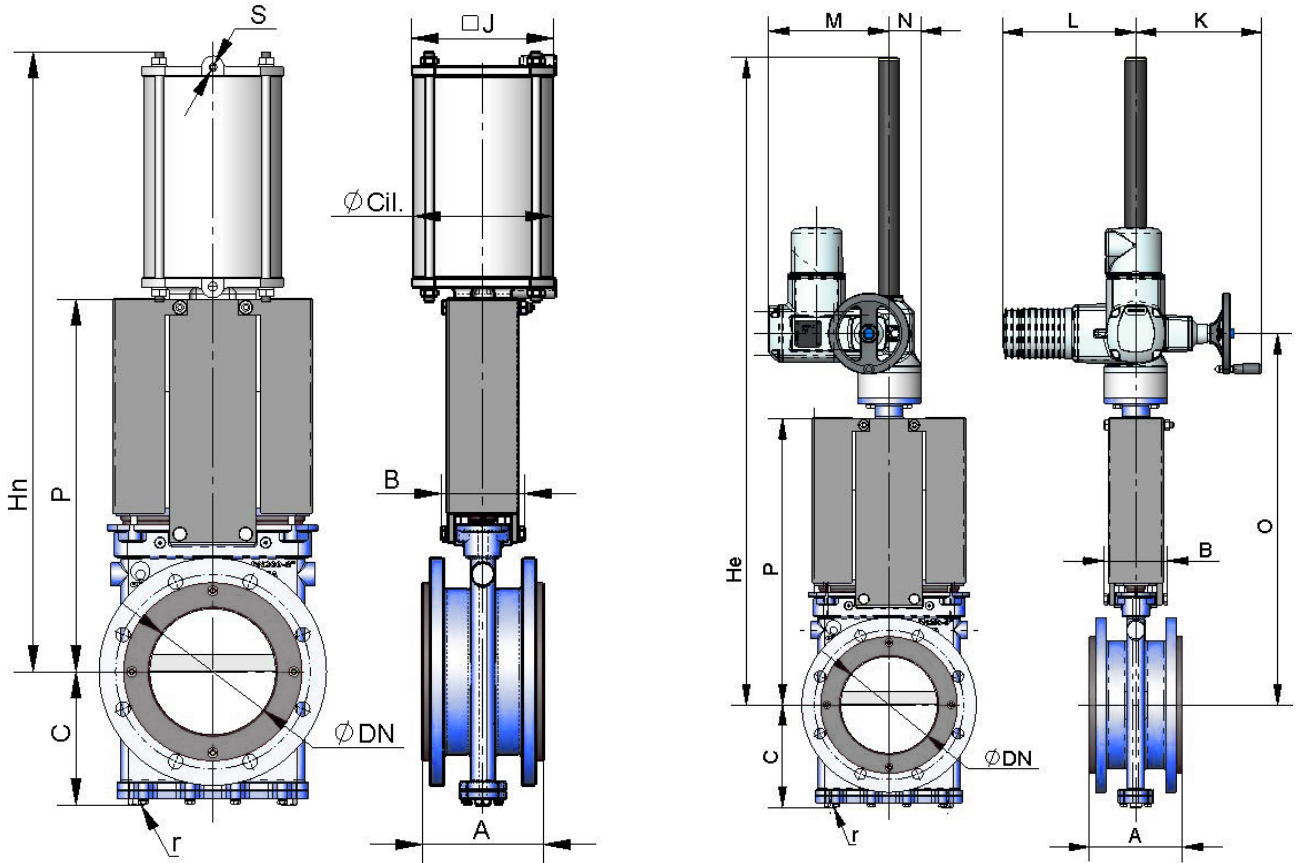


MANUEL KUMANDALI

DN	ΔP (Kg/cm ²)	DRAFT (Nw)	PAR (Nm)	A	B	C	P	D	ϕV
50	10	920	2	175	109	106	280	319	225
65	10	1553	4	175	109	113	306	345	225
80	10	2352	5	175	109	122	332	372	225
100	10	3674	8	175	109	136	368	407	225
125	10	5739	16	178	126	153	421	474	325
150	10	8267	24	178	126	168	466	519	325
200	10	14709	42	184	126	199	565	618	325
250	10	23001	89	225	197	234	626	749	450
300	10	33156	129	257	197	272	739	837	450
350	10	45198	175	257	350	297	842	942	-
400	10	59178	263	279	350	330	993	1033	-
450	10	74891	333	311	350	355	1019	1119	-
500	10	92469	506	359	380	391	1156	1256	-
600	10	133494	730	372	400	461	1338	1438	-

YÜKSELEN MİLLİ MANUEL KUMANDA

DN	ΔP (Kg/cm ²)	DRAFT (Nw)	PAR (Nm)	A	B	C	P	D	Hv
50	10	920	2	175	109	106	280	319	225
65	10	1553	4	175	109	113	306	345	225
80	10	2352	5	175	109	122	332	372	225
100	10	3674	8	175	109	136	368	407	225
125	10	5739	16	178	126	153	421	474	325
150	10	8267	24	178	126	168	466	519	325
200	10	14709	42	184	126	199	565	618	325
250	10	23001	89	225	197	234	626	749	450
300	10	33156	129	257	197	272	739	837	450
350	10	45198	175	257	350	297	842	942	-
400	10	59178	263	279	350	330	993	1033	-
450	10	74891	333	311	350	355	1019	1119	-
500	10	92469	506	359	380	391	1156	1256	-
600	10	133494	730	372	400	461	1338	1438	-



ÇİFT ETKİLİ PNOMATİK AKTUATÖRLÜ

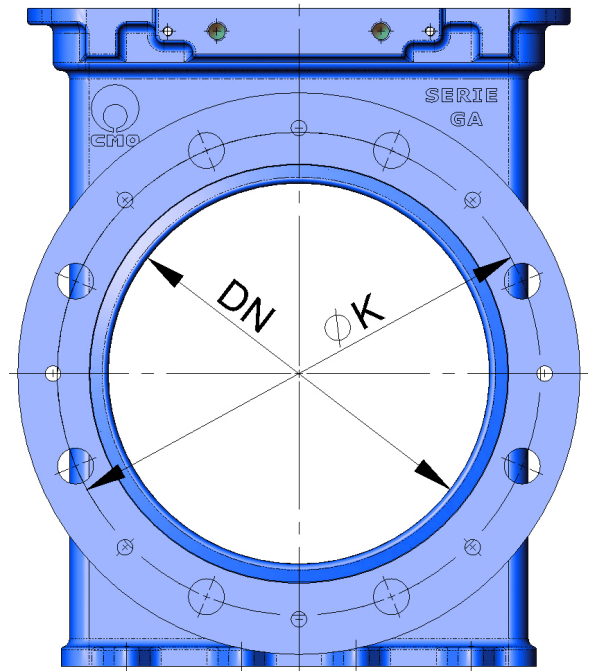
DN	ΔP (Kg/cm ²)	DRAFT (Nw)	A	B	C	P	Hn	J	Ø CIL	Ø ROD
50	10	920	175	109	106	280	475	96	80	20
65	10	1553	175	109	113	306	515	96	80	20
80	10	2352	175	109	122	332	555	115	100	20
100	10	3674	175	109	136	368	620	138	125	25
125	10	5739	178	126	153	421	700	175	160	30
150	10	8267	178	126	168	466	775	175	160	30
200	10	14709	184	126	199	565	940	218	200	30
250	10	23001	225	197	234	626	1140	270	250	40
300	10	33156	257	197	272	739	1300	382	300	45
350	10	45198	257	350	297	842	1485	444	350	45
400	10	59178	279	350	330	993	1655	508	400	50
450	10	74891	311	350	355	1019	1805	552	450	50
500	10	92469	359	380	391	1156	2000	612	500	50
600	10	133494	372	400	461	1338	2285	772	585	60

ELEKTRİK AKTUATÖRLÜ

DN	ΔP (Kg/cm ²)	TIRO (Nw)	(PAR)	A	B	C	P	K	L	M	N	O	He
50	10	920	2	175	109	106	280	249	265	238	62	436	631
65	10	1553	4	175	109	113	306	249	265	238	62	462	657
80	10	2352	5	175	109	122	332	249	265	238	62	488	683
100	10	3674	8	175	109	136	368	249	265	238	62	524	719
125	10	5739	16	178	126	153	421	249	265	238	62	574	769
150	10	8267	24	178	126	168	466	249	265	238	62	624	819
200	10	14709	42	184	126	199	565	249	265	238	62	723	1033
250	10	23001	89	225	197	234	626	254	283	248	65	781	1121
300	10	33156	129	257	197	272	739	254	283	248	65	879	1219
350	10	45198	175	257	350	297	842	249	265	407	82	975	1384
400	10	59178	263	279	350	330	993	254	283	424	82	1078	1627
450	10	74891	333	311	350	355	1019	254	283	424	82	1170	1719
500	10	92469	506	359	380	391	1156	336	389	479	103	1338	1889
600	10	133494	730	372	400	461	1338	336	389	479	103	1520	2171

EN1092-2 PN10

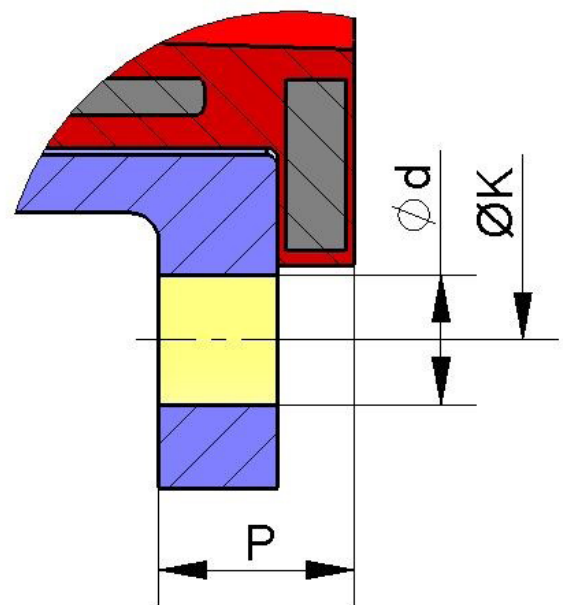
DN	ΔP (Kg/cm ²)	o	$\varnothing d$	P	$\varnothing K$
50	10	4	18	32	125
65	10	4	18	32	145
80	10	8	18	32	160
100	10	8	18	32	180
125	10	8	18	32	210
150	10	8	22	32	240
200	10	8	22	33	295
250	10	12	22	35	350
300	10	12	22	37	400
350	10	16	22	37	460
400	10	16	26	41	515
450	10	20	26	45	565
500	10	20	26	46	620
600	10	20	30	49	725

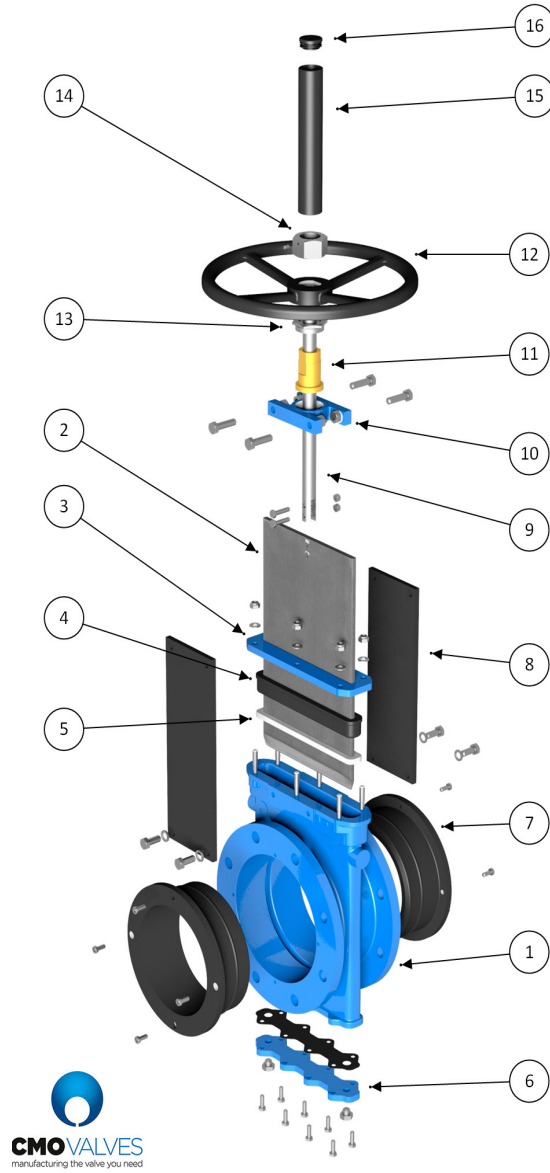


O THROUGH BOREHOLE

ANSI B16 CLASS 150

DN	ΔP (Kg/cm ²)	A	R UNC	P	$\varnothing K$
50	10	4	3 / 4"	1,28"	4,75"
65	10	4	3 / 4"	1,28"	5,5"
80	10	4	3 / 4"	1,28"	6"
100	10	8	3 / 4"	1,28"	7,5"
125	10	8	7/8"	1,28"	8,5"
150	10	8	7/8"	1,28"	9,5"
200	10	8	7/8"	1,32"	11,75"
250	10	12	1"	1,40"	14,25"
300	10	12	1"	1,48"	17"
350	10	12	1 1/8"	1,48"	18,75"
400	10	16	1 1/8"	1,64"	21,25"
450	10	16	1 1 / 4"	1,80"	22,75"
500	10	20	1 1 / 4"	1,84"	25"
600	10	20	3 / 8"	1,96"	29"





STANDART ÜRÜN LİSTESİ

NO	ÜRÜN	DÖKÜM	PASLANMAZ ÇELİK
1	Body	GJS-500	CF8M
2	Gate	AISI304	AISI316
3	Packing gland	STEEL	AISI316
4	Packing seal	NATURAL RUBBER	NATURAL RUBBER
5	Gasket	LUBRICATED GASKET	LUBRICATED GASKET
6	Bottom cover	STEEL	AISI316
7	Sleeve	NATURAL RUBBER	NATURAL RUBBER
8	Retainer sleeve	NATURAL RUBBER	ACERO
9	Stem	AISI303	AISI303
10	Yoke	GJS-500	GJS-500
11	Stem nut	BRONZE	BRONZE
12	Handwheel	GJS-500	GJS-500
13	Stopper nut	STEEL	STEEL
14	Hood nut	5.6 ZINC	5.6 ZINC
15	Hood	STEEL	STEEL
16	Protection cap	PLASTIC	PLASTIC